

# Wayout v1.00

Maze game for Nokia 9210/9290 Communicator

## *Quick Start Guide*



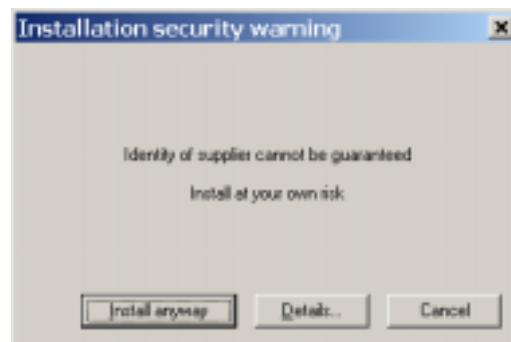
## 1. Minimum Requirements

- Nokia 9210/9290 Communicator, at least 950k free memory for storage and 2.3M free memory for running
- A PC desktop with Nokia 9210/9290 PC Suite installed
- Connection cable/IR between your PC and the Nokia 9210/9290

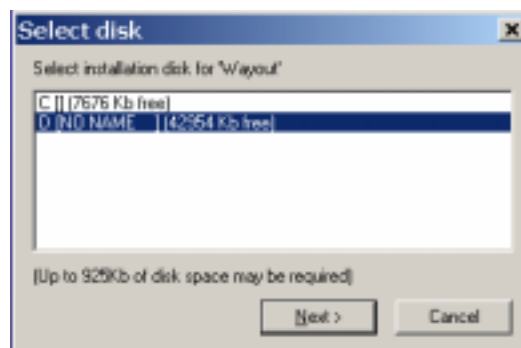
## 2. Installation

- a) Make sure you connect the Nokia Communicator to the PC using connection cable or IR
- b) Run the file **Wayout100ENG.SIS** and it will be automatically installed to your Nokia Communicator

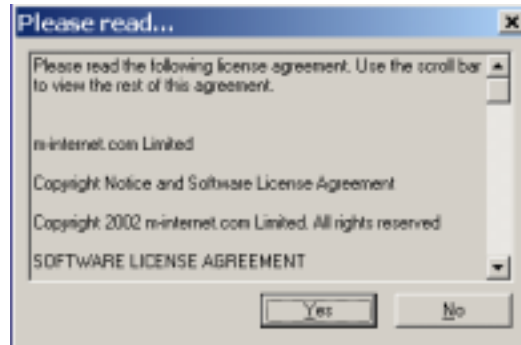
When the screen shows as below, just press 'Install anyway' button to proceed the installation.



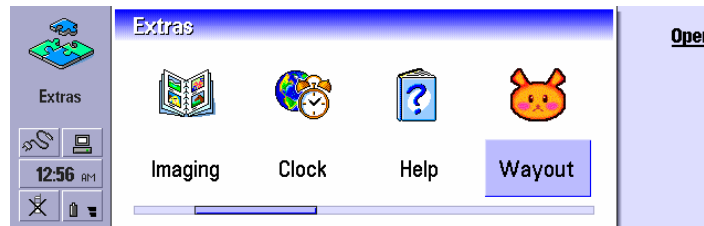
- c) Select the UK English as language installation
- d) You can choose to install **Wayout** in the main memory or the MMC storage card if you have (recommended)



- e) Please read through the License Agreement and if you accept please press 'Yes' to install the software:




- f) Press the Extra button  to run the **Wayout** program



- g) If it is the first time to run the **Wayout** program, please enter the provided Registration Code to activate the software.

### 3. *Playing the game*

Your objective is to find out the Exit  in the fastest time before the countdown timer ended, and try to avoid touching any kind of creatures to hurt your energy level.

Each level has different difficulty and different orientation of the maze for your challenge.



During playing game, the following keys can be used:

Up Cursor – Move Up



Down Cursor – Move Down



Left Cursor – Move Left



Right Cursor – Move Right

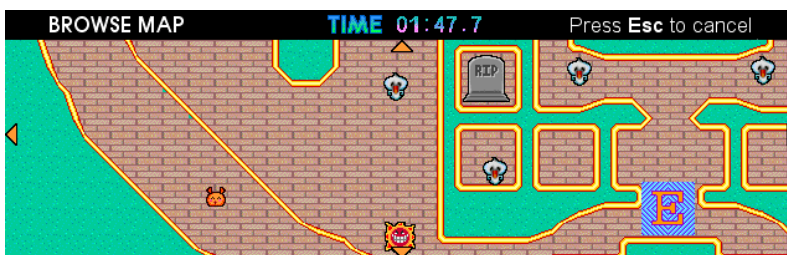


Also you can press the corner keys to move in diagonal directions.

If you need help to browse the map of the town, anytime you can press the top CBA button (Label 1 below), and choose “**Browse Map**”.

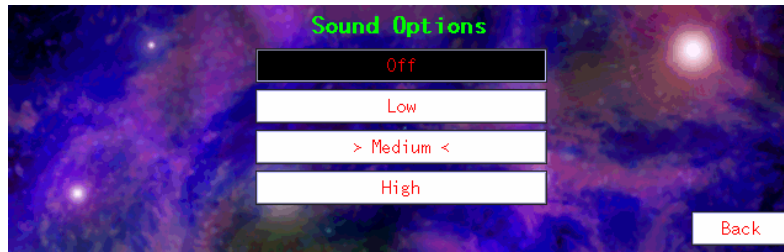


You can use <Left>,<Right>,<Top>,<Bottom> buttons to move around the town, but remember it waste your time to browse the map. Pressing <Esc> to be back to the game.



## ***4. Options***

Using the Options menu to customize the keys used to play the game and the volume level.



## ***5. Contact, Support and Questions***

General Information and latest update:

Visit website <http://m-internet.com>

Send email to [info@m-internet.com](mailto:info@m-internet.com)

Support:

Send email to [support@m-internet.com](mailto:support@m-internet.com)

Sales:

Send email to [sales@m-internet.com](mailto:sales@m-internet.com)